

# Revel

## Spec /Installation Sheets



# 24" Revel

- Material: Solid Wood
- Melamine & lacquer Finished
- Finished Interiors (same as exterior color)
- Interior Adjustable Shelf
- Open Back
- Ceramic Sinks w/ Overflow (removable chrome overflow hardware)

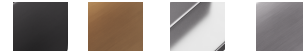
## -Color Finishes:

Matte White, Midnight Blue, Sandcastle



## -Hardware Finishes:

Matte Black, Brushed Brass, Chrome, Brushed Nickel



## Vanities:

- SB124WH
- SB124BL
- SB124SC

## Sinks:

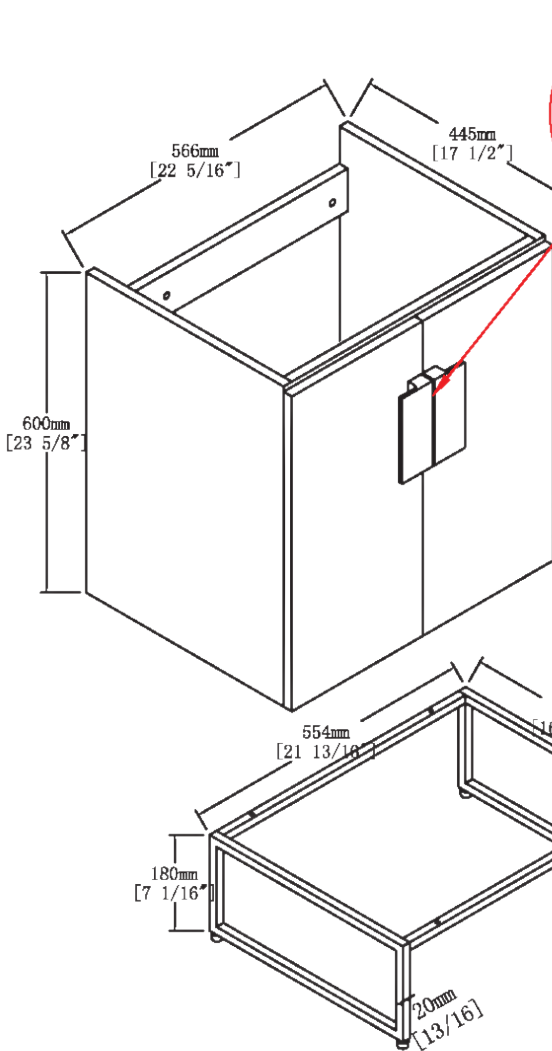
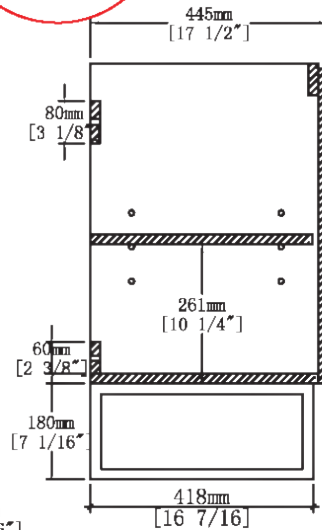
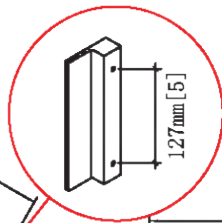
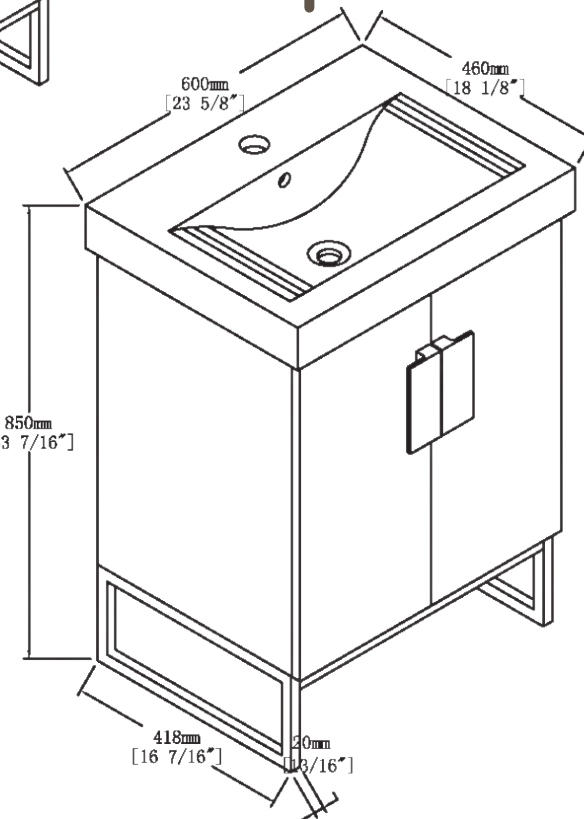
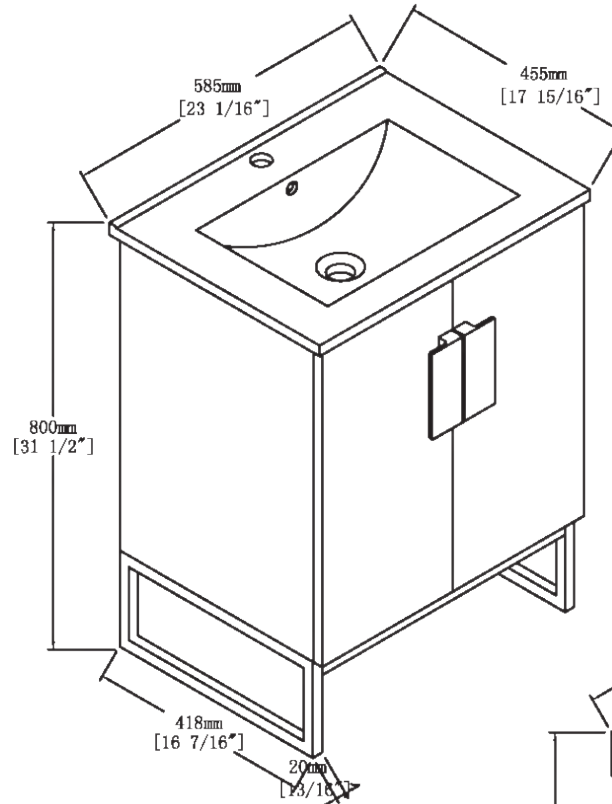
- SB124S1
- SB124S3
- SB124SIT
- SB124S3T

## Bases:

- SB124BBLK
- SB124BBRS
- SB124BCRM
- SB124BNKL

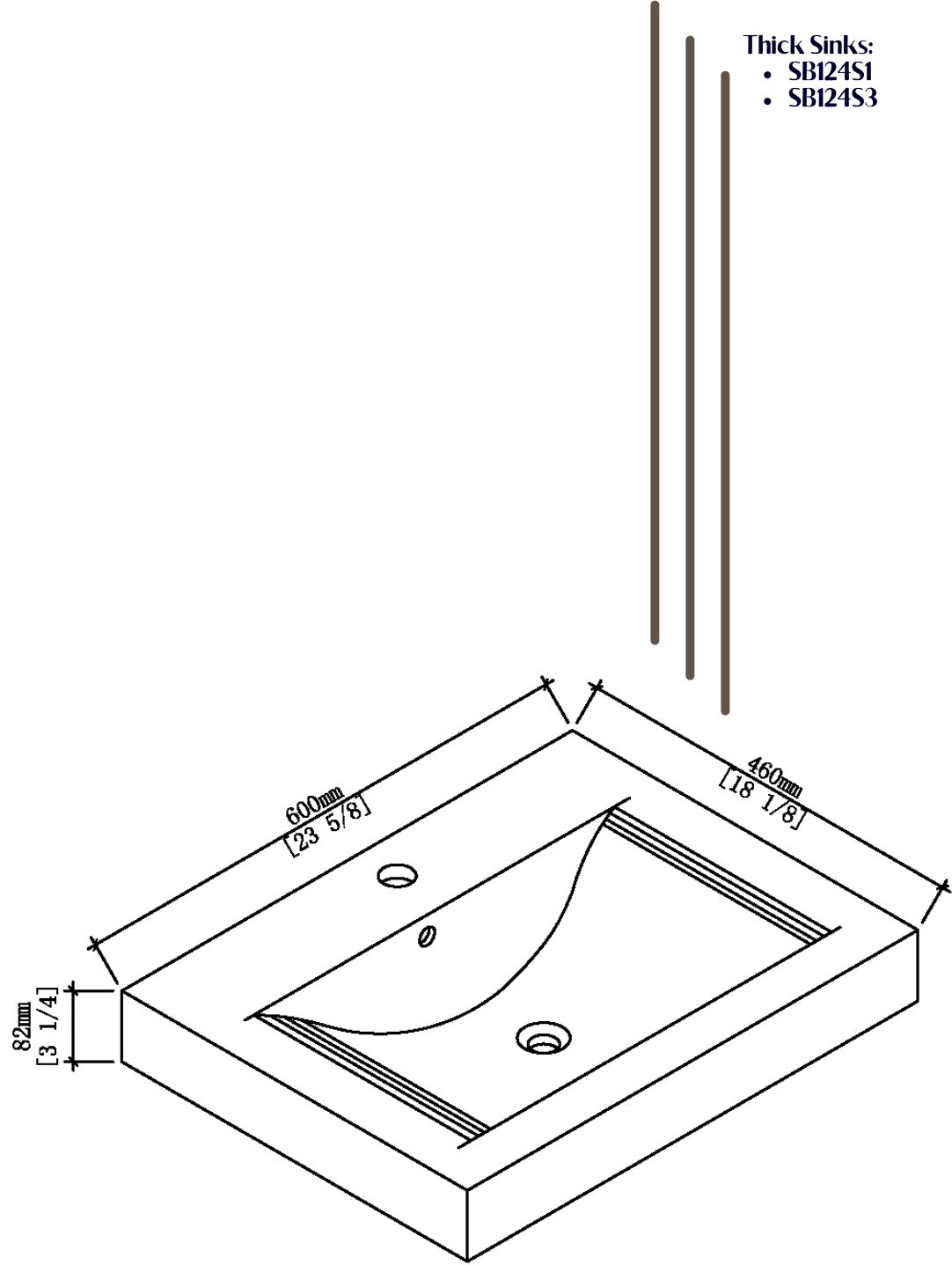
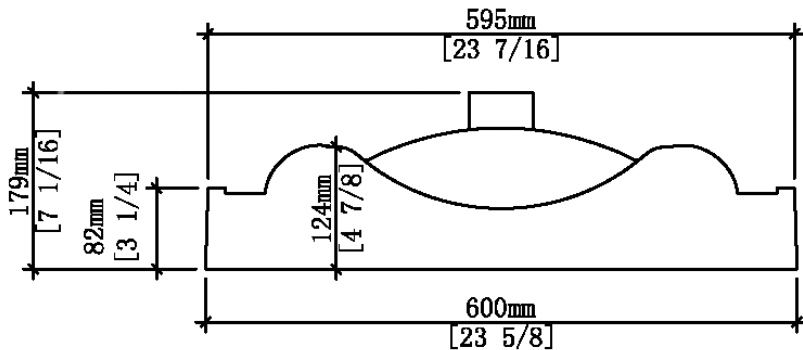
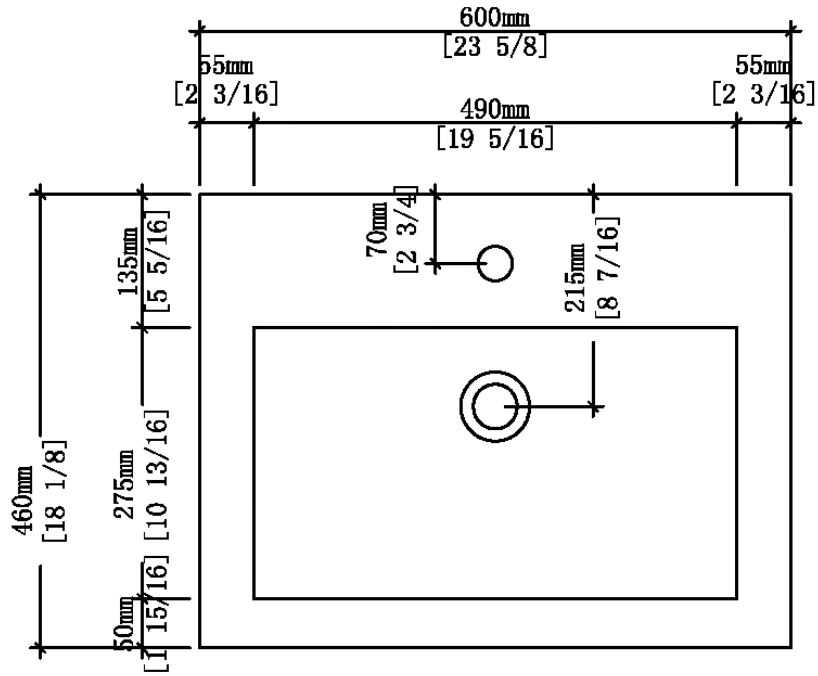
## Handles:

- SB1HBLK
- SB1HBRS
- SB1HCRM
- SB1HNKL



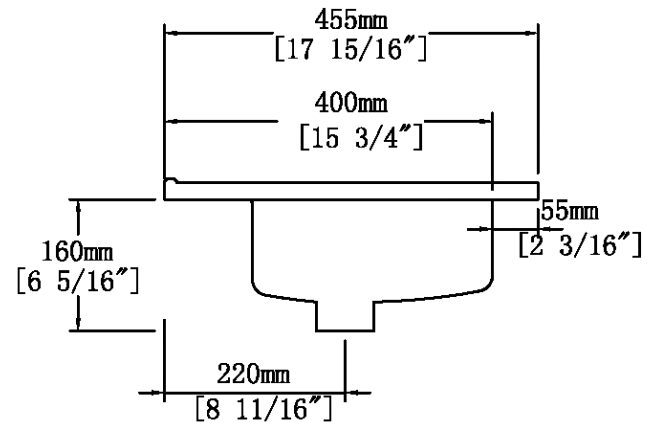
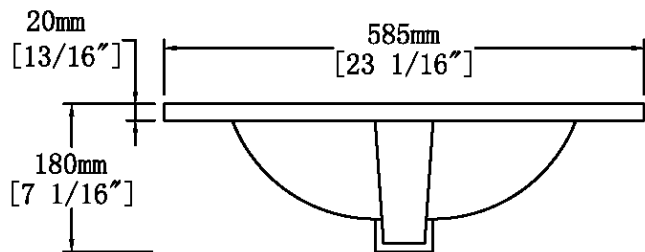
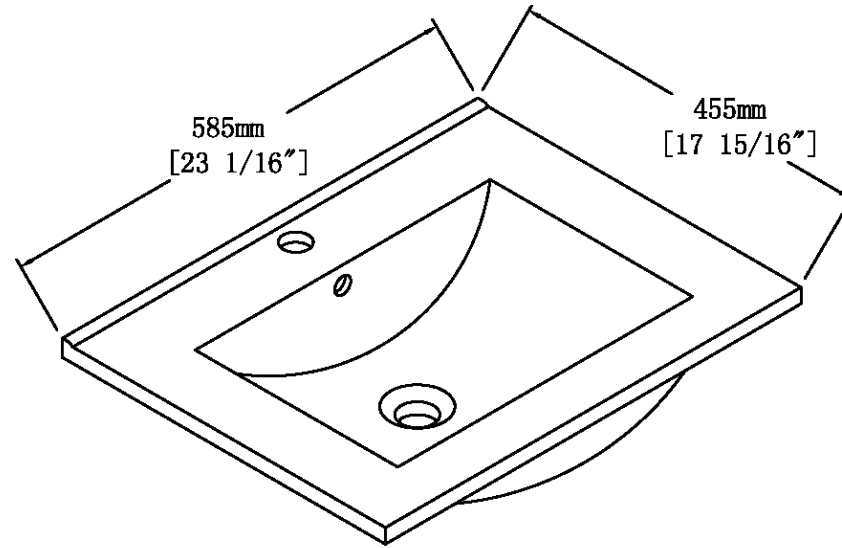
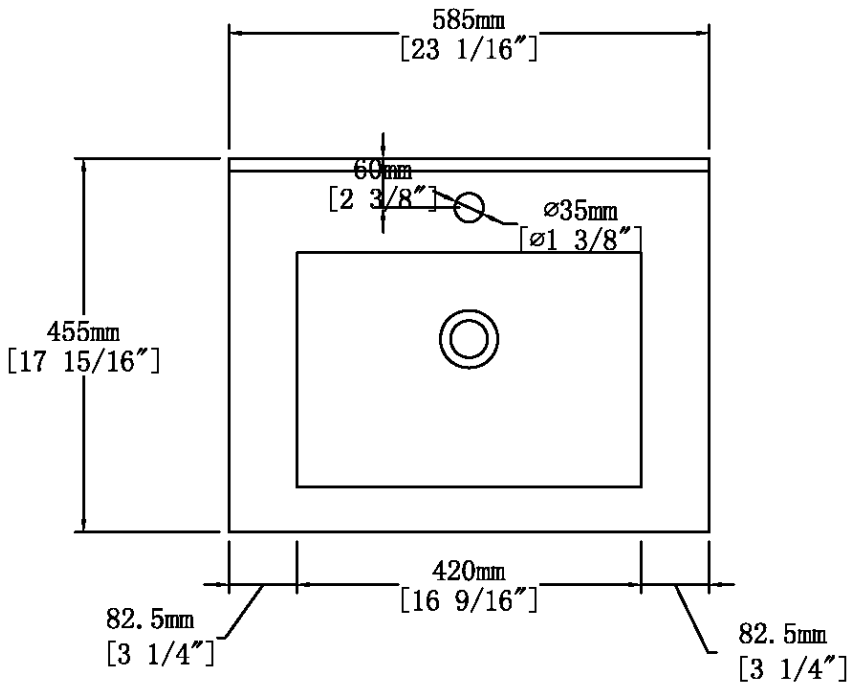
# 24" Revel

Thick Sinks:  
• SB124S1  
• SB124S3



# 24" Revel

Thin Sinks:  
• SB124S1T  
• SB124S3T



# 30" Revel

- Material: Solid Wood
- Melamine & lacquer Finished
- Finished Interiors (same as exterior color)
- Interior Adjustable Shelf
- Open Back
- Ceramic Sinks w/ Overflow (removable chrome overflow hardware)

## -Color Finishes:

Matte White, Midnight Blue, Sandcastle



## -Hardware Finishes:

Matte Black, Brushed Brass, Chrome, Brushed Nickel



## Vanities:

- SB130WH
- SB130BL
- SB130SC

## Sinks:

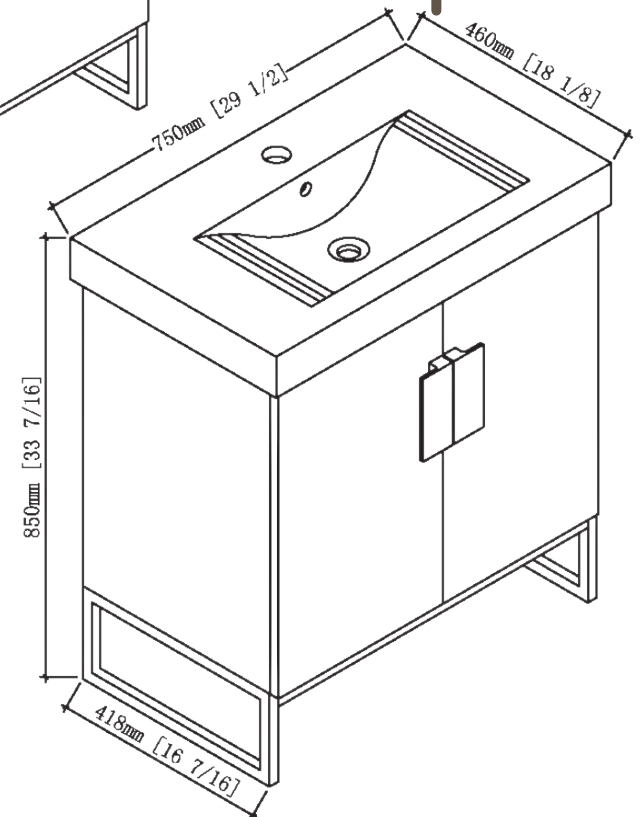
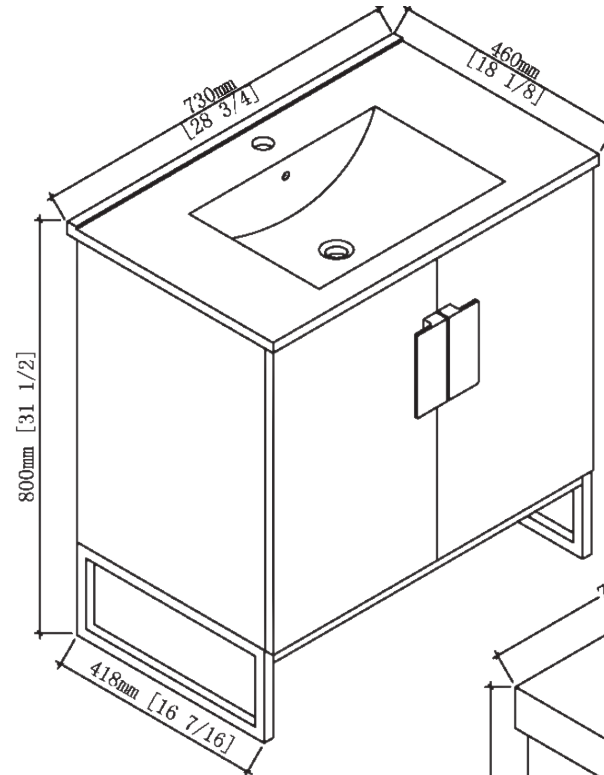
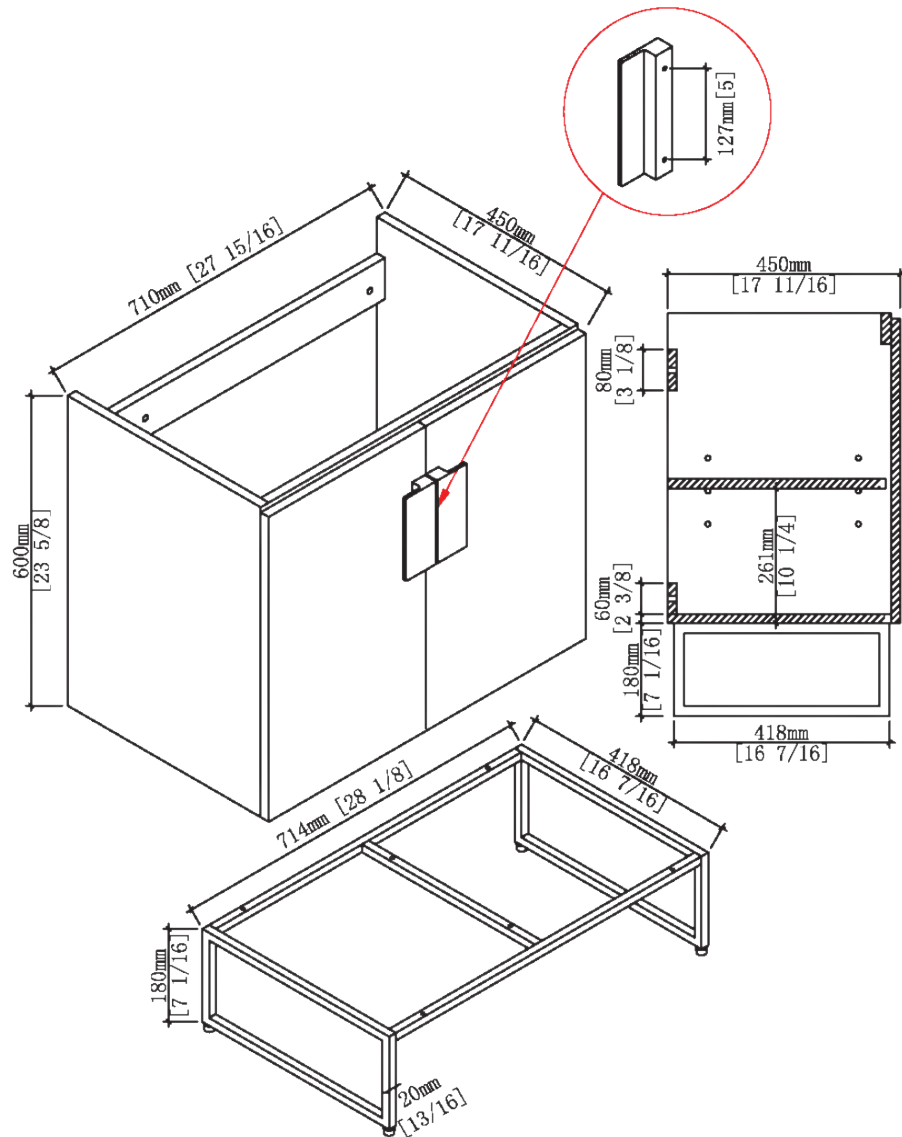
- SB130S1
- SB130S3
- SB130SIT
- SB130S3T

## Bases:

- SB130BBLK
- SB130BBRS
- SB130BCRM
- SB130BNKL

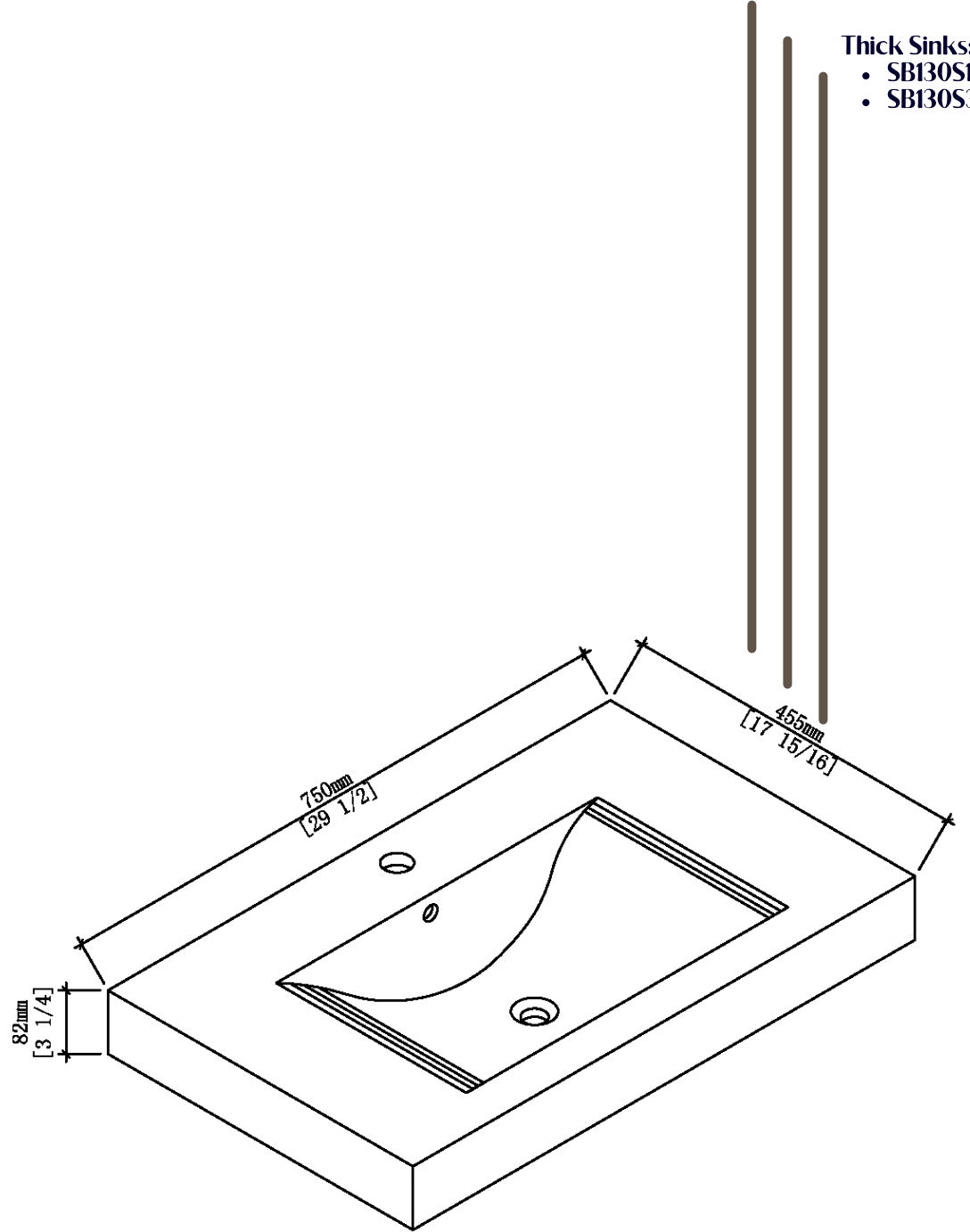
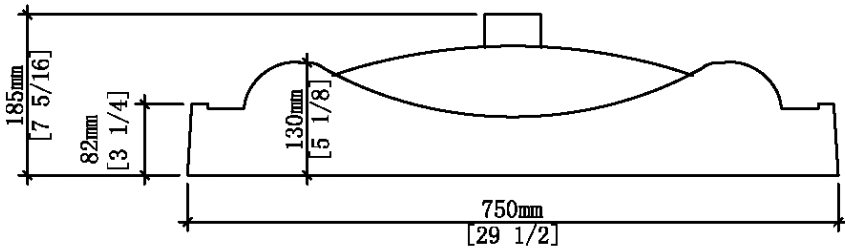
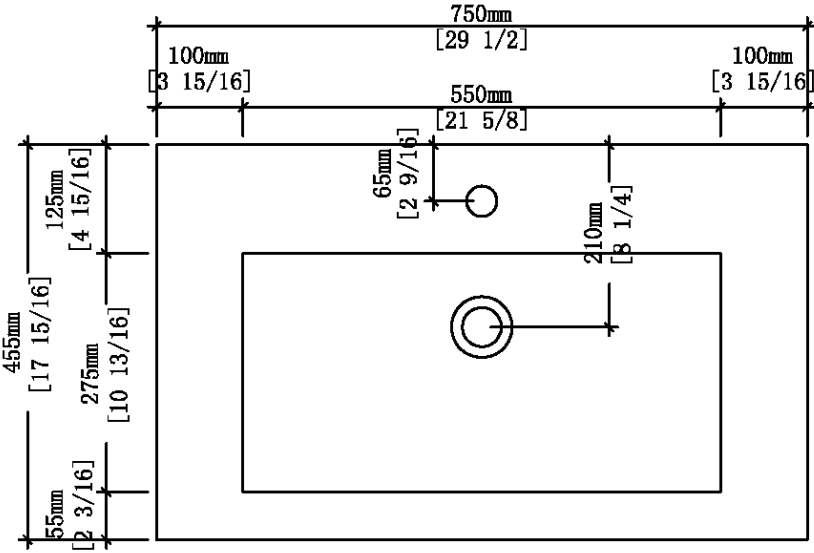
## Handles:

- SB1HBLK
- SB1HBRS
- SB1HCRM
- SB1HNKL



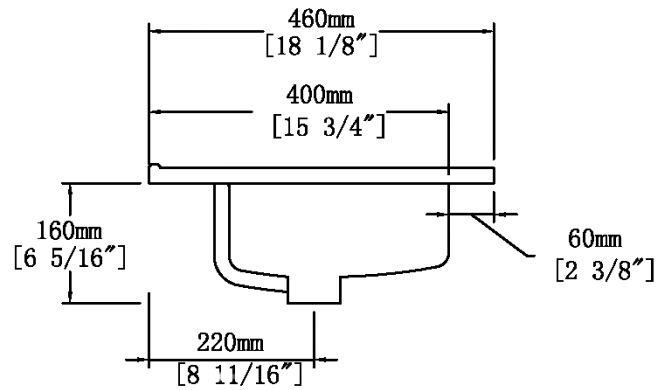
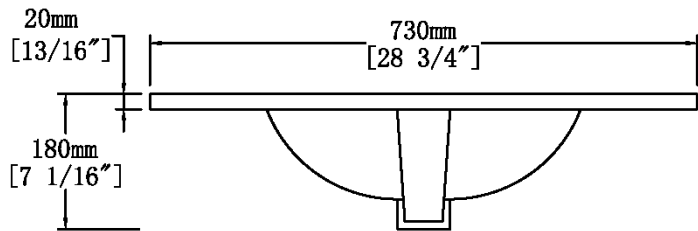
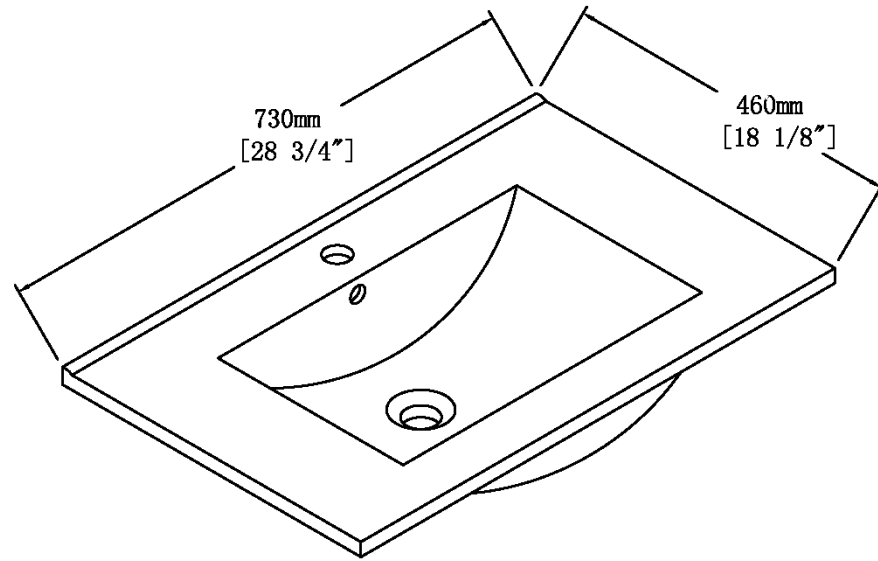
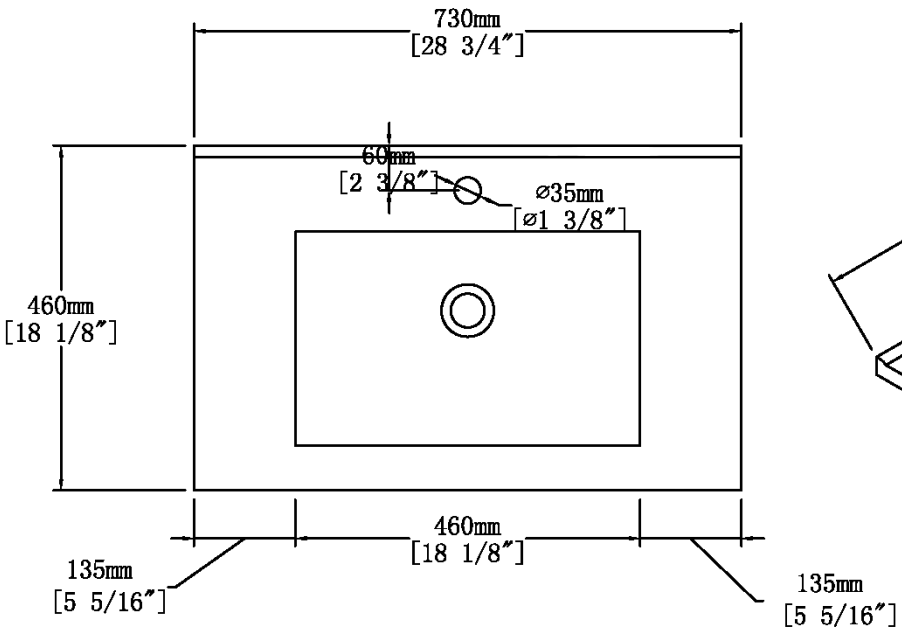
# 30" Revel

Thick Sinks:  
• SB130S1  
• SB130S3



# 30" Revel

Thin Sinks:  
• SB130S1T  
• SB130S3T

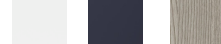


# 36" Revel

- Material: Solid Wood
- Melamine & lacquer Finished
- Finished Interiors (same as exterior color)
- Interior Adjustable Shelf
- Open Back
- Ceramic Sinks w/ Overflow (removable chrome overflow hardware)

## -Color Finishes:

Matte White, Midnight Blue, Sandcastle



## -Hardware Finishes:

Matte Black, Brushed Brass, Chrome, Brushed Nickel



## Vanities:

- SB136WH
- SB136BL
- SB136SC

## Sinks:

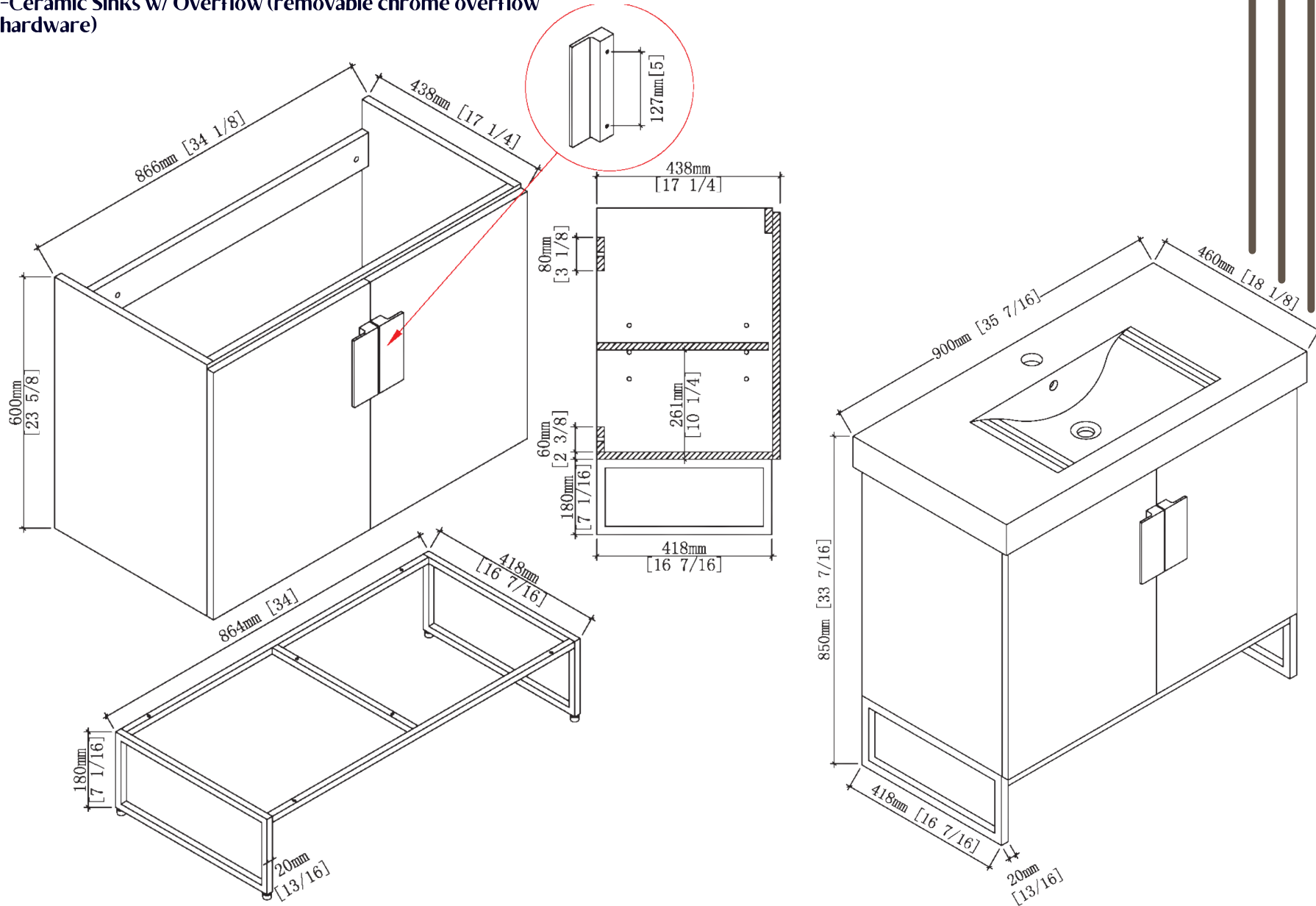
- SB136S1
- SB136S3

## Bases:

- SB136BBLK
- SB136BBRS
- SB136BCRM
- SB136BNKL

## Handles:

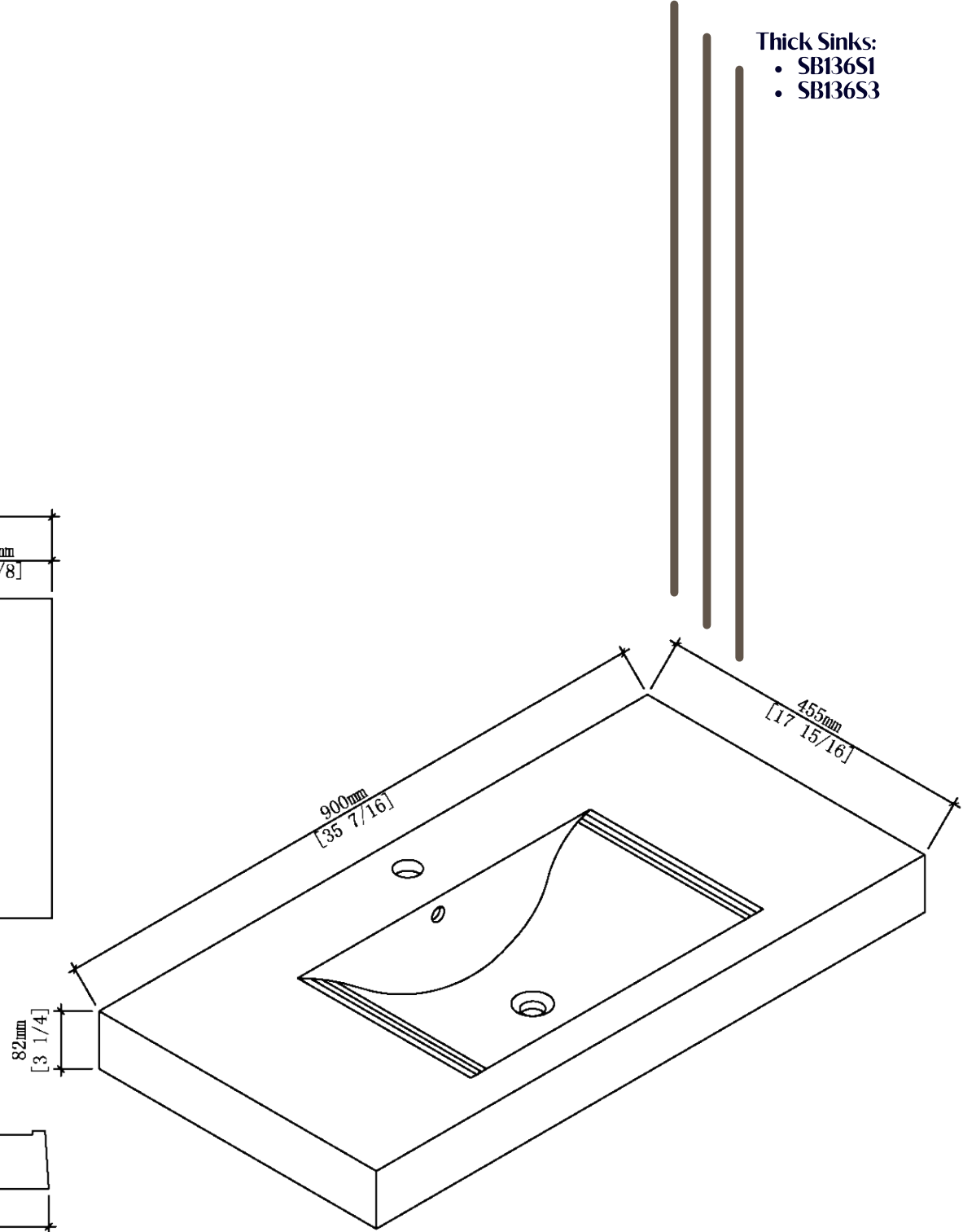
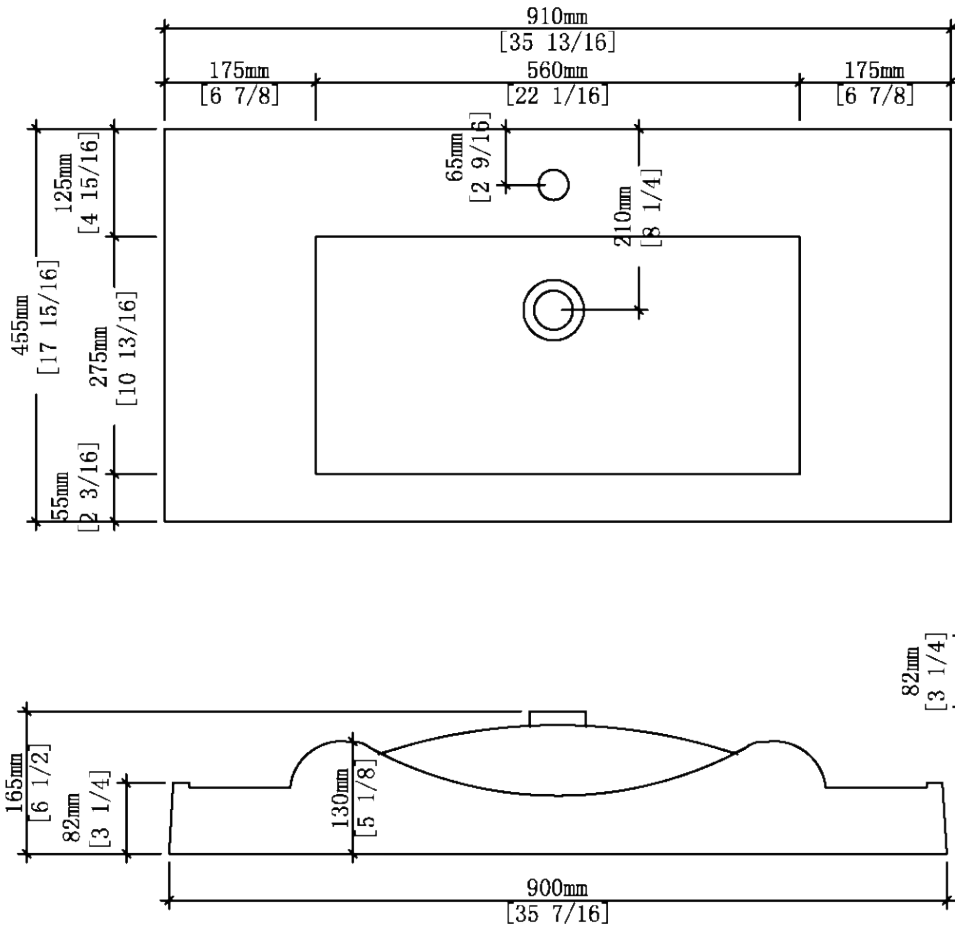
- SB1HBLK
- SB1HBRS
- SB1HCRM
- SB1HNKL





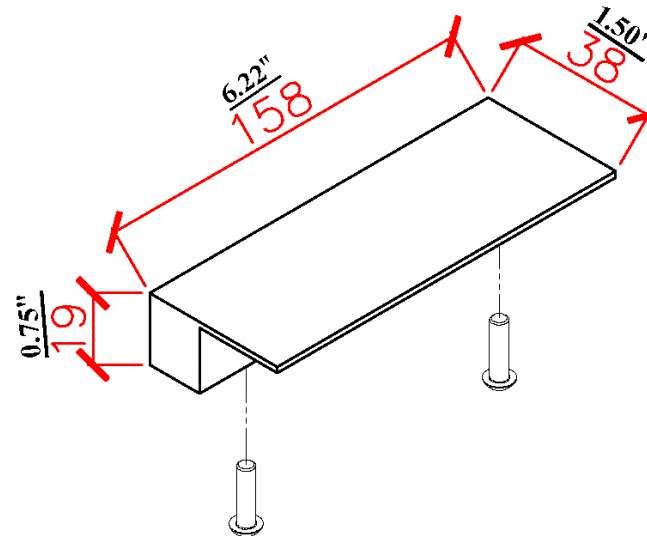
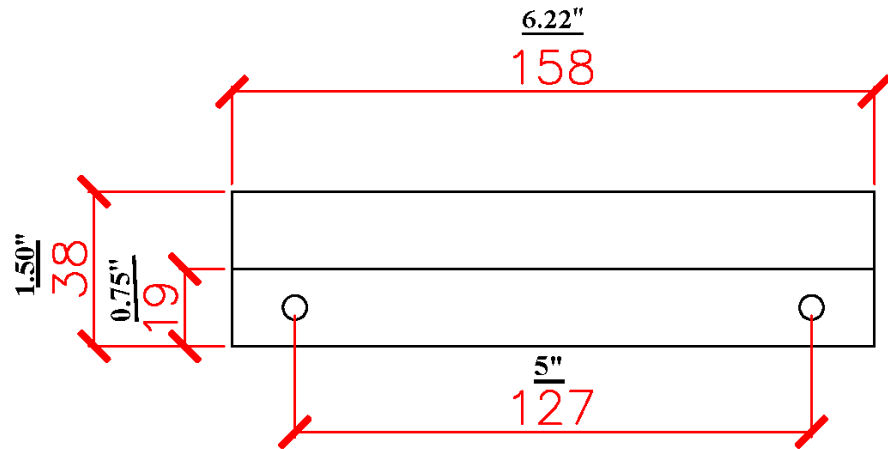
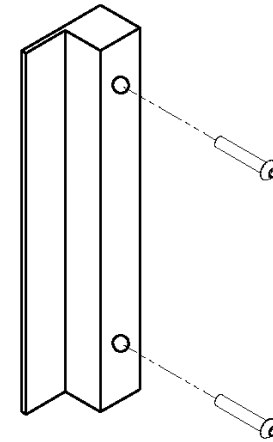
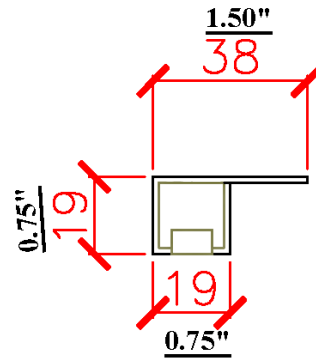
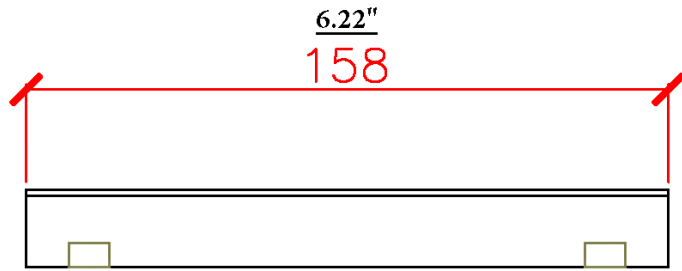
# 36" Revel

Thick Sinks:  
• SB136S1  
• SB136S3



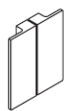
# Handles

- Handles:
- SB1HBLK
  - SB1HBRS
  - SB1HCRM
  - SB1HNKL

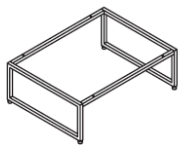


# Installation

## MATERIALS INCLUDED



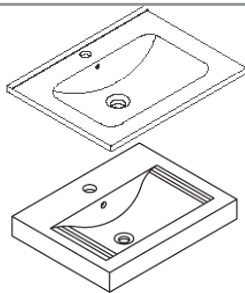
Handles  
X2



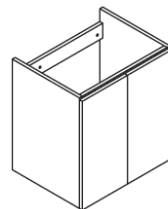
Base  
X1



Screws  
X8



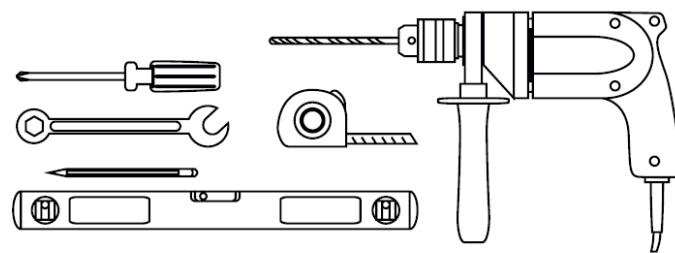
Sink  
X1



Vanity  
X1

(X10 for 30" and 36" vanities)

## TOOLS REQUIRED



### Step 1:

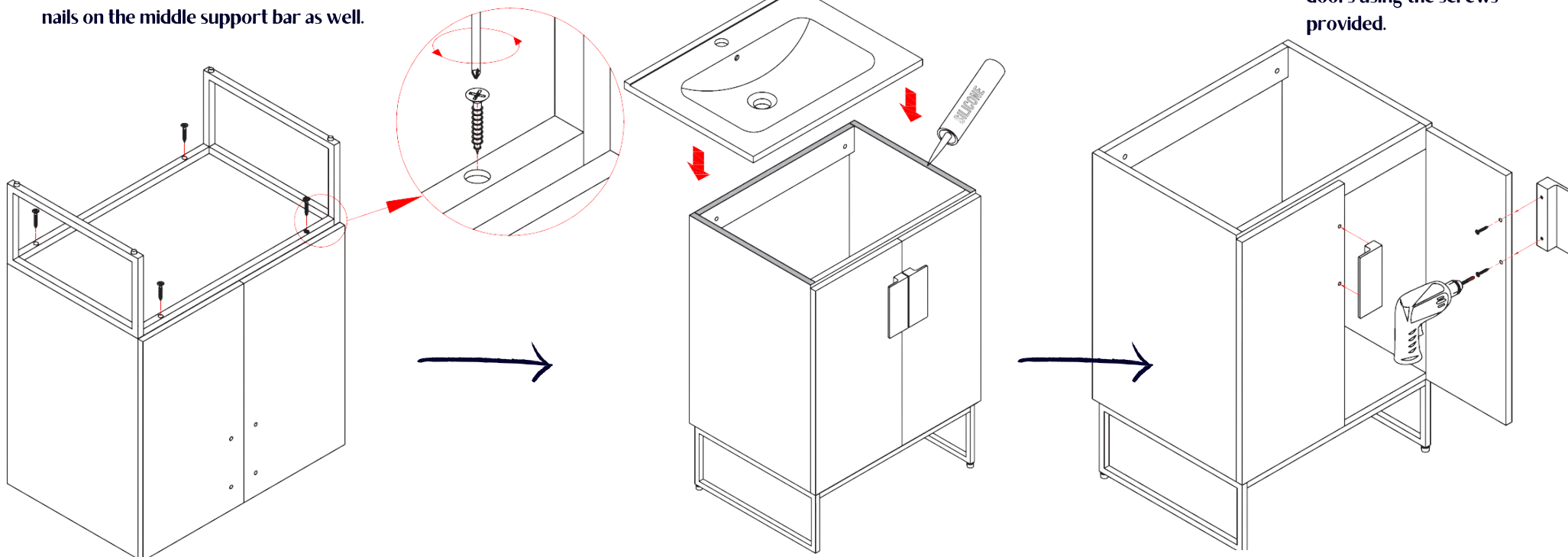
Carefully lay the vanity upside down and screw the base into the predrilled holes at the bottom of the vanity.  
For 30' and 36' vanities, be sure to screw the nails on the middle support bar as well.

### Step 2:

Carefully lay the vanity upright and install the sink. Then install the faucet to the top and the drains to the sink (Not INCLUDED. Refer to the faucet and drain manufacturer's instructions). Check for leaks. Apply a bead of silicone behind the top surface to the finished wall

### Step 3:

Attach the handles to the doors using the screws provided.



# Care Instructions

## Dusting:

Dust cabinets frequently with a soft lint-free cloth. You can dampen the cloth slightly with water or a spray-type dust remover.

## Spills:

Clean spills immediately. Use a clean cloth and mild soap if necessary. Wipe dry with a clean soft cloth.

## Cleaning:

Use wood cleaning products and clean cloth. Wipe dry with clean soft cloth.

## Polishing:

We recommend that you wash and polish cabinets once or twice each year. Use a light coat of quality furniture polish.

## Don'ts:

Never use detergents, soap pads, or steel wool on your cabinetry. These harsh abrasives will mar the wood finish. Additionally, we recommend that you avoid the use of paste wax and polishes that contain silicone; the wax build up is difficult to remove and will leave a residue that attracts dust.

- Clean up excess water and spills immediately and blot dry.
- Water left over a long period of time may cause white spots in the finish.
- Alcohol, perfume, after-shave and medications may damage the finish.
- Dust vanity frequently with a clean, soft, dry, lint-free cloth.
- Wood vanity may be cleaned with a variety of commercial products made for this purpose.
- Follow manufacturer's application and cleaning instructions.
- Always test on the inside of the door to be sure it will not harm the finish.
- Avoid silicone cleaners and waxes. While silicone cleaners create a high degree of shine, silicone seeps into even the highest quality finishes, creating a barrier that will not accept stain or lacquer. This makes it virtually impossible to refinish or touch-up your vanity.
- Waxes should be avoided because their regular use may result in a buildup of wax film on the surface of the vanity. This buildup could actually attract dirt, smoke and other pollutants in the air, resulting in smudges and streaks. Also, many waxes contain grit that can permanently damage furniture surfaces if used improperly.
- Always use only a damp soft cloth to clean your Bath Cabinets.
- Never use abrasive cleansers on any part of your Bath Cabinet.
- Never use a scouring sponge.
- Never use bleach, solvents (like nail polish remover), or harsh cleaners on your cabinets